

MSRP \$59.98

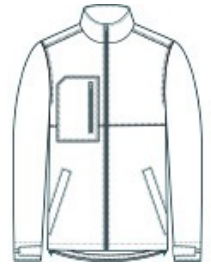


Tough jobs call for tough workwear and this water-resistant soft shell fits the bill with a roomy fit for easy layering over hoodies and work shirts.

- 100% polyester shell with water-resistant finish bonded to water-resistant film insert and a 100% polyester brushed microfleece lining
- Fabric waterproof rating: 1000MM
- Fabric breathability rating: 1000G/M2
- Triple-needle stitching
- Vertical zippered right chest pocket
- Reinforced front pockets
- Exposed center front zippered closure with longer pull
- Self-fabric adjustable tab cuffs with hook and loop closures
- Adjustable draw cord hem

CARE INSTRUCTIONS

Machine Wash Cold. Only Non-Chlorine Bleach, When Needed. Do Not Use Fabric Softener. Tumble Dry Low. Cool Iron, If Necessary. Do Not Dry Clean.



front



back

HOW TO MEASURE



CHEST WIDTH

Measure under the arm and around the fullest part of the chest with arms down, keeping tape horizontal.

1 to 11 \$51.00 + \$4.00 logo 12 up \$45.00 + \$4.00 logo, blank \$45.00. Need big or tall see sanmar full line, Edwards and Redkap .

SIZE CHART

	XS	S	M	L	XL	2XL	3XL	4XL
Chest	32-34	35-37	38-40	41-43	44-46	47-49	50-53	54-57

COLOR INFORMATION

Please note: PMS code information is shown only when an exact match is available.



Black
PMS BLACK C



Iron Grey
PMS 7540C



Navy
PMS 532C