

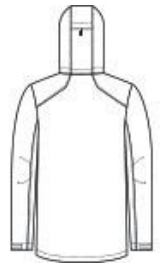


This 3-in-1 jacket outsmarts the cold with all-weather versatility.

- 100% polyester shell and lining
- 7.4-ounce, 100% polyester fleece zip-in inner jacket
- Removable, adjustable 3-panel hood with locking draw cords
- Molded center front 2-way zipper
- Shaped exterior storm flap with snap closure
- Interior storm flap and chin guard
- Port Pocket™ for decoration access
- Articulated elbows
- Adjustable cuffs with hook and loop closures
- Adjustable hem with locking draw cord
- Inner jacket: molded center front zipper, zippered hand pockets, binding at hem and cuffs
- Outer shell fabric waterproof rating: 3000MM
- Outer shell fabric breathability rating: 1000G/M2
- Outer shell water protection method: water-resistant finish and PU coating
- 3-in-1 system jacket: zip-in/zip-out fleece inner jacket



front

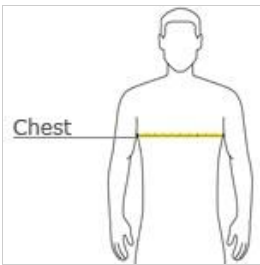


back

**CARE INSTRUCTIONS**

Outershell: Machine Wash Cold Gentle Cycle Separately. Do Not Bleach. Do Not Use Fabric Softener. Tumble Dry Low Remove Promptly. Do Not Iron. Fasten All Closures Before Washing. Do Not Dry Clean. Inner Jacket: Machine Wash Cold Gentle Cycle With Like Colors. Non-Chlorine Bleach When Needed. Tumble Dry Low. Do Not Iron.

**HOW TO MEASURE**



**CHEST WIDTH**

Measure under the arm and around the fullest part of the chest with arms down, keeping tape horizontal.

**J123-L123**

**1 to 11 \$85.00 -12 up \$75.00 logo \$4.00 x 2 both pieces . Blank \$75.00. \*\*\*\*\***

**SIZE CHART**

**Also check out the collective shells and liners**

	XS	S	M	L	XL	2XL	3XL	4XL
Chest	32-34	35-37	38-40	41-43	44-46	47-49	50-53	54-57

**COLOR INFORMATION**



Black  
PMS BLACK C



River Blue Navy  
PMS 533C



Storm Grey  
PMS 7540C



True Blue  
PMS 654C